

spring 2012

# plane talk

 Northwest  
Aerospace Alliance

## UAVs

Opportunities for  
autonomous systems

### Plus:

Events & Airshows  
New shared services  
North West News  
The latest from the Isle of Man





# Plane Sailing after 150 years

On April 16th one hundred and forty five years ago, Wilbur Wright was born.

Some people won't recognise the name immediately however Wilbur and his brother Orville were better known as the Wright Brothers, and were credited in 1903 with inventing and building the world's first successful airplane.

In 1867, the same year when Wilbur Wright was born, a pioneering UK Engineering company moved into their 80,000sqft custom built Castle Iron Works premises, on Overens Street, Oldham, UK.

It is difficult to believe that after more than 145 years, that same engineering company still operates from the same Castle Iron Works premises. In fact last year, Oldham Engineering Ltd., a successful and thriving medium-heavy engineering business, marked their 150 year anniversary and they can still be found in the factory today, where it all began.

Alan Roddis, CEO of Oldham Engineering Ltd. said, "It is incredible when you think that the company has survived two world wars, numerous recessions, depressions and economic meltdowns and has not only managed to continue trading for such a long period, they have also held onto their original 'bricks and mortar' foundations, which date back to 1867".

Oldham Engineering Ltd. was previously named Buckley and Tayler, and made a name for themselves in the 1860's in the production of steam engines. Their earliest recorded engine was a vertical overhead compound engine of 20 ihp built in 1867 for Sun Mill Co. Ltd. to power an extension to the mill.

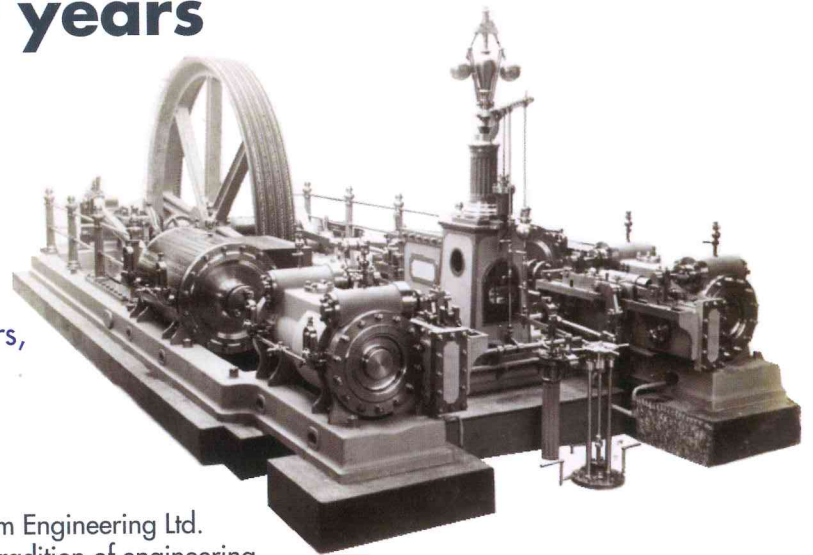
Today Oldham Engineering Ltd. continue the tradition of engineering in their Castle Iron Works site providing engineering solutions with a medium - heavy engineering capacity and a highly trained workforce.

They undertake a wide range of engineering jobs including precision CNC machining, fabrication, mechanical assembly, repair and refurbishment, serving all industrial sectors from Oil, Nuclear and Defence to Power Generation, Steel and Mining.

Oldham Engineering Ltd. is a leading specialist in Turnkey Project management in the medium-heavy engineering sector. Their trusted quality brand and reputation allows them to serve the most prestigious engineering industry sectors, including the Aerospace industry.

Over the last decade, Oldham Engineering has delivered a range of Aircraft engineered projects, specifically for defence aircraft and associated ancillary equipment.

Marking the One hundredth and Forty fifth anniversary of Wilbur Wright's birthday, Oldham Engineering had their latest showcase 5 axis machine tool delivered in Spring 2012; a Soraluze floor boring machining centre capable of machining components up to 10m long and over 3m high in a single operation.



This latest machine tool development is part of a significant capital investment program over the next 12 months, which will help to ensure Oldham Engineering maintains its leading premier position in the UK engineering sector.

Alan Roddis continues, "Who knows where the next 150 years will take the company. We do however know that we have a very credible 5 year game plan for the company's continued growth and development. This coupled with our highly skilled and loyal workforce and excellent brand name and reputation, we help to ensure that we are fit for the future".

For further information about Oldham Engineering Ltd., please see [www.oldham-eng.com](http://www.oldham-eng.com)

